

Refrigeration Equipment 2-Door Sandwich/Salad Prep Table 61" Long 16-1/6 Pan

ITEM # _____
MODEL # _____
NAME # _____
SIS # _____
AIA # _____



738257 (KCHST60.16)

2-Door Sandwich/Salad Prep
Table 61" Long 16-1/6 Pan

Short Form Specification

Item No.

2-door sandwich/salad refrigerated preparation table. Exterior back panel and exterior bottom panel in galvanized steel, exterior side and top panels in 430 stainless steel; interior back, top panels and interior bottom panel in 304 stainless steel, worktop in 304 stainless steel. Built-in refrigeration unit and an insulated lid to maintain food freshness. Fin & Tube Condenser improves performance in high-temperature environments. Automatic Defrost Cooling System to provide worry-free performances. Full-depth cutting board of 61x11.4x0.5 in. Control panel, Vinyl-Coated Steel adjustable shelves, removable door gaskets and self-closing doors with 90-degree stay-open feature. Temperature range: +33/+41°F. R290 gas in the refrigeration circuit. ETL Safety and Sanitation certifications. 3/5 Years warranty.

Main Features

- External temperature display.
- Removable gasket for easy cleaning operations.
- Fin & Tube Condenser improves performance in high temperature environments.
- Automatic Defrost Cooling System provides worry-free performance.
- Electronic Temperature Control, quick and simple to set, with control display for easy monitoring.
- Full Depth cutting board.
- Cabinet completely insulated with high density polyurethane for low environmental impact.
- Heavy duty Vinyl coated steel shelves.
- Adjustable shelves for flexible storage
- Removable rubber bumper guards for airflow spacing and shock absorption

Construction

- Stainless steel interior and exterior, durable and easy to clean for daily commercial use.
- White polystyrene interior side panels, for high impact resistance
- Holds 16 1/6 pans.
- Insulated lid maintains food freshness.
- Heavy duty casters.
- Pre-wired heavy duty power cord.
- Heavy duty door hinges.
- Magnetic gasket removable without tools for easy cleaning.
- Self-closing door with 90-degree stay-open feature.
- Stainless steel worktop, durable functionality

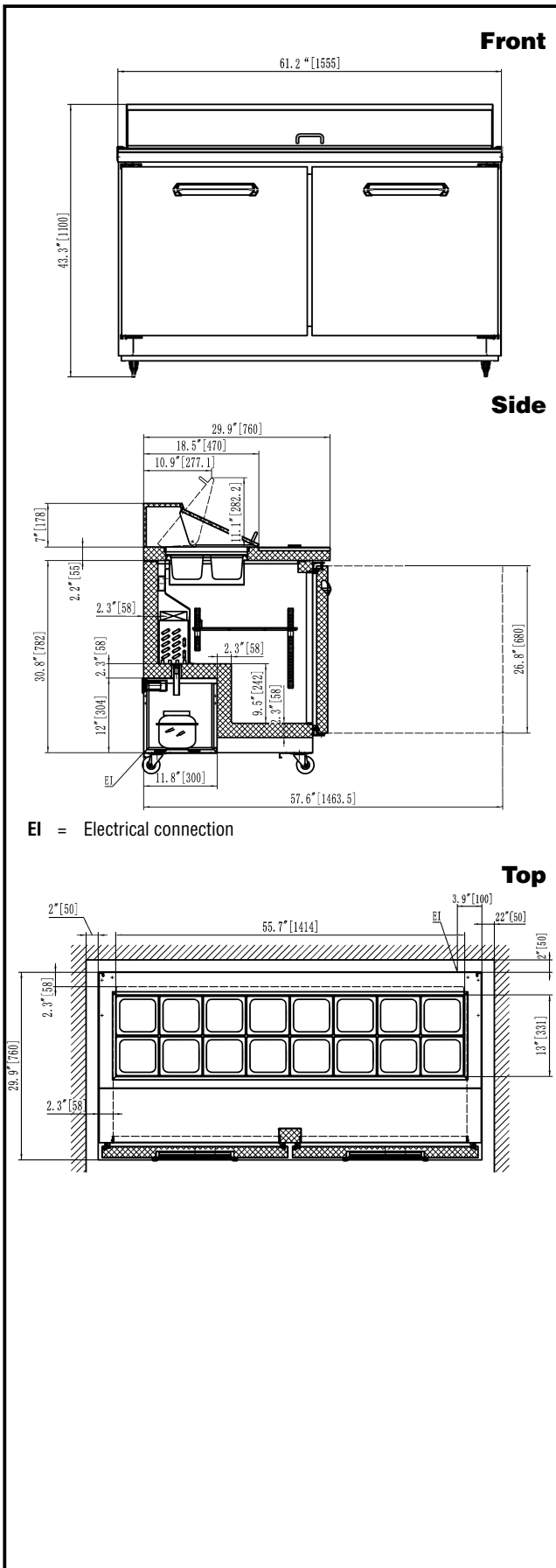
Sustainability

- CFC and HCFC free, highly ecological refrigerant type: R290 (ecological gas in foam: cyclopentane). Hydrocarbon refrigerant gas R290 for the lowest environmental impact (GWP=3), to reduce green house and ozone depletion effects.
- High efficiency components to minimize the energy consumption still guaranteeing the highest performances.
- Hydrocarbon refrigerant gas R290 for the lowest environmental impact (GWP=3) - CFC and HCFC free.
- 58 mm insulation for energy saving

Optional Accessories

- Drawer Kit for 60" Mega Top & Undercounter PNC 880617 ☐

APPROVAL: _____



Electric

Supply voltage:	115 V/1 ph/60 Hz
Electrical power, max:	0.78 kW
Plug type:	USA NEMA 5-15P

Capacity:

Gross capacity:	15.5 cu.feet
-----------------	--------------

Key Information:

Type of grids (included):	Vinyl-Coated steel
Warranty:	3 / 5 years
Door hinges:	1 Left+1 Right
External dimensions, Width:	61 1/4" (1555 mm)
External dimensions, Depth:	29 15/16" (760 mm)
External dimensions, Height:	43 5/16" (1100 mm)
Number and type of doors:	2 Full
Internal Dimensions (depth):	23 13/16" / (605 mm)
Internal Dimensions (height):	23 1/2" / (597 mm)
Internal Dimensions (width):	56 1/4" / (1429 mm)
Shipping height:	47 1/4" (1200 mm)
Shipping weight:	392 lbs (178 kg)
Shipping volume:	54.07 ft ³ (1.53 m ³)
Type of external material:	Stainless Steel
Type of internal material:	Polystyrene
Approvals	ETL C&US;ETL SANITATION

Refrigeration Data

Current absorbed:	738257 (KCHST60.16)	4.3 Amps
Condenser type:		Fin & tube
Operating temperature min.:		32 °F
Compressor power:		1/3 hp
Operating temperature max.:		41 °F
Defrost type:		Auto Defrost

Sustainability

Refrigerant type:	R290
GWP Index:	3
Refrigerant weight:	90 g